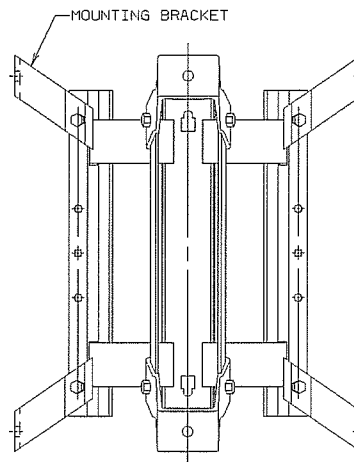
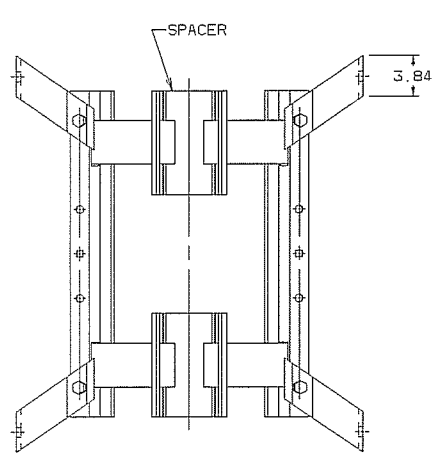
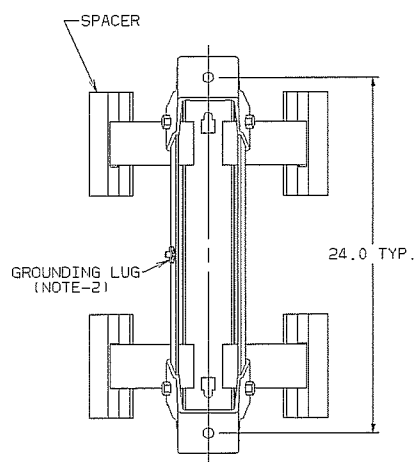
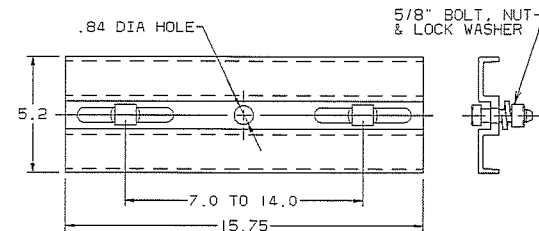
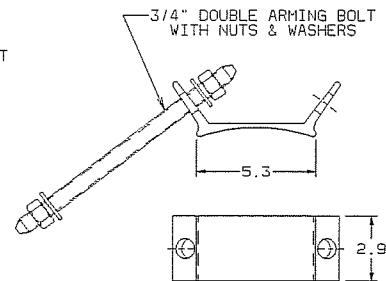
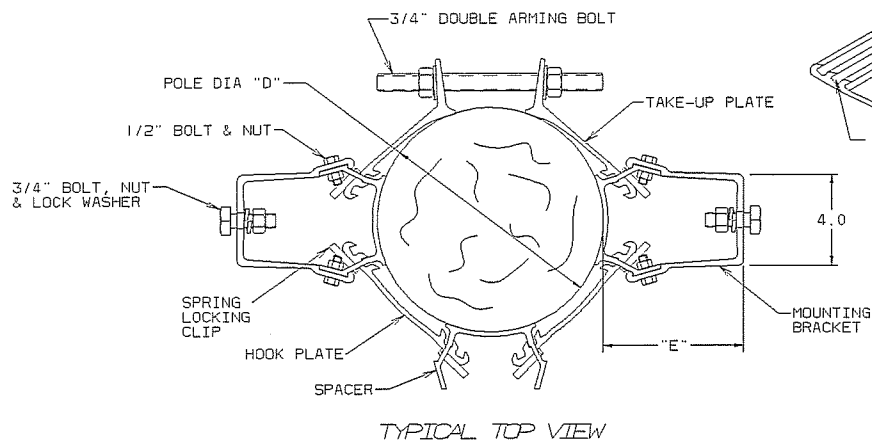


- NOTES -

1. ALL BRACKET MATERIAL IS ALUMINUM. BOLTS, NUTS AND WASHERS ARE GALVANIZED STEEL.
2. ONE STAINLESS STEEL GROUNDING LUG IS ASSEMBLED TO EACH CLUSTER MOUNT. THIS CAN BE RELOCATED AS DESIRED FOR EASY ATTACHMENT OF THE GROUND WIRE.
3. EACH CLUSTER MOUNT INCLUDES DETAILED INSTALLATION INSTRUCTIONS AND A POLE MEASURING TAPE WHICH AIDS IN CONVENIENT "ON THE GROUND" ADJUSTMENT (IF NECESSARY) BEFORE HANGING ON THE POLE.
4. EXTENSION PLATES CAN BE USED WITH ANY OF THE LISTED CLUSTER MOUNT ASSEMBLIES TO INCREASE THE POLE DIAMETER RANGE BY APPROXIMATELY FIVE INCHES.
5. ADAPTER PLATES ALLOW MOUNTING OF LARGER TRANSFORMERS WITH TYPE C LUGS. TWO PLATES ARE REQUIRED PER TRANSFORMER.



CLUSTER MOUNT ASSEMBLIES				
CATALOG NO.	REFERENCE FIGURE	NUMBER OF TRANSFORMERS SUPPORTED	"D" NOMINAL POLE DIAMETER RANGE	"E" NOMINAL MOUNTING DISTANCE FROM POLE
CSM1-6	FIG. 1	1	7-3/4 TO 12-1/4	6"
CSM1-9	FIG. 1	1	7-3/4 TO 12-1/4	9"
C10M2-6	FIG. 2	2	7-3/4 TO 12-1/4	6"
C10M2-9	FIG. 2	2	7-3/4 TO 12-1/4	9"
C15M3-6	FIG. 3	3	7-3/4 TO 12-1/4	6"
C15M3-9	FIG. 3	3	7-3/4 TO 12-1/4	9"
C15M3-9-9	FIG. 3	3	7-3/4 TO 12-1/4	6"-9"-6"
CSM1-6-5	FIG. 1	1	6-1/2 TO 11-1/2	6"
CSM1-9-5	FIG. 1	1	6-1/2 TO 11-1/2	9"
C10M2-6-5	FIG. 2	2	6-1/2 TO 11-1/2	6"
C10M2-9-5	FIG. 2	2	6-1/2 TO 11-1/2	9"
C15M3-6-5	FIG. 3	3	6-1/2 TO 11-1/2	6"
C15M3-9-5	FIG. 3	3	6-1/2 TO 11-1/2	9"
C15M3-9-9-5	FIG. 3	3	6-1/2 TO 11-1/2	6"-9"-6"
CSM1-6-14	FIG. 1	1	9-1/2 TO 14	6"
CSM1-9-14	FIG. 1	1	9-1/2 TO 14	9"
C10M2-6-14	FIG. 2	2	9-1/2 TO 14	6"
C10M2-9-14	FIG. 2	2	9-1/2 TO 14	9"
C15M3-6-14	FIG. 3	3	9-1/2 TO 14	6"
C15M3-9-14	FIG. 3	3	9-1/2 TO 14	9"
C15M3-9-14-14	FIG. 3	3	9-1/2 TO 14	6"-9"-6"

LATEST EC NO.	REV.	DATE	CHANGED BY	DESG. ENGINEER
				HOYT
DWN BY: DATE		TITLE:		
H. E. C. 3-17-52		MOUNT, DOUBLE BAND CLUSTER		
HUBBELL		CHARGE		DWG. NO. SACSM1-6

THIRD ANGLE PROJECTION
ISO DIMENSIONS
2X-ZOOM, 75-MILLI-METER

ALL DIMENSIONS AND THE CONTENTS ARE CONSIDERED TO BE THE EXCLUSIVE PROPERTY OF HUBBELL, CHARGE COMPANY, AND PUBLICATION, DISTRIBUTION, OR REPRODUCTION WITHOUT WRITTEN PERMISSION BY HUBBELL, CHARGE COMPANY, IS PROHIBITED.